

IMPLEMENTING THE COMMON ASSESSMENT FRAMEWORK, (CAF)

GUIDANCE FOR CHILDREN AND YOUNG PEOPLE'S SOCIAL CARE. INFORMATION FOR OTHER AGENCIES

[1] Introduction.

[2] Professional making referral to Children and Young people's social care following completion of a Common Assessment (CA).

[3] Referral from a non professional or Professional not accessing the CAF.

[4] Related Documents:

**(a) Leeds City Council Children and Young People's Social Care, Children's Service Procedures, CS 1.1, Assessment, Children.
*Available from the Council Intranet as follows: LCC Home Page / Children and Young People's Social Care / Reference Documents / Procedures / Children's Procedures/ Procedures documents / 1.1 Assessment***

**(b) Common Assessment Framework, Inter Agency Practice Guidance for Practitioners Undertaking Common Assessment.
*Copies available from Joanne.mason@leeds.gov.uk***

(c) Priority Grid (Appendix A, attached)

**(d) Guidance for Agencies in Making a Referral to Children and Young People's Social Care
(Appendix B, attached)**

(e) List of trained CAF practitioners by Wedge or for an up to date list contact the Common assessment team on 0113 2795261. (Appendix C)

(f) Contact details for the Integrated Processes Coordinators (IPC) for each wedge. Details of CAF office, admin and IT support. Details of Work Force Development Team. (Appendix D)

February 2008.

[1] Introduction:

This practice guidance is for use by social workers, managers and support staff city wide in the use of the Common Assessment Framework (CAF).

The guidance is intended to be read alongside Children and Young People's Social Care *Children's Service Procedures* and the Children Leeds *Inter Agency Practice Guidance for Practitioners Undertaking Common Assessment*. This guidance replaces any existing CAF procedures and takes precedence over them.

This guidance, for Children and Young People's Social Care, supports the implementation of common assessment being undertaken under the umbrella of the Children Leeds Executive. For a brief overview of the CAF please refer to pp 4-6 of the Interagency Practice Guidance for Practitioners. *Copies available from Joanne.mason@leeds.gov.uk* a web based information service will soon be available.

Implementation of the Common Assessment (CA) is an opportunity to further develop joint working. Though these procedures detail that social workers will not be directly responsible for undertaking Common Assessments, where appropriate the input and use of Social Workers and Social Work Assistants skills and experiences will benefit the development of the CAF process and enhance Integrated Working. This should be encouraged where at all possible. This is of course reliant on capacity and resources available.

It is recommended that at least one/two workers from each Assessment Team (Social workers or Social work Assistants) are trained to undertake Common Assessments and that all social workers and social work assistants have full knowledge of the CAF process.

In addition all Managers should attend the Managers briefings to ensure they have an understanding of the CAF.

To support and monitor the work Children and Young People's Social Care practitioners will undertake regarding the CAF, some minor changes will be required to ESCR. This work remains ongoing and further advice and guidance will be issued in due course.

Authors:

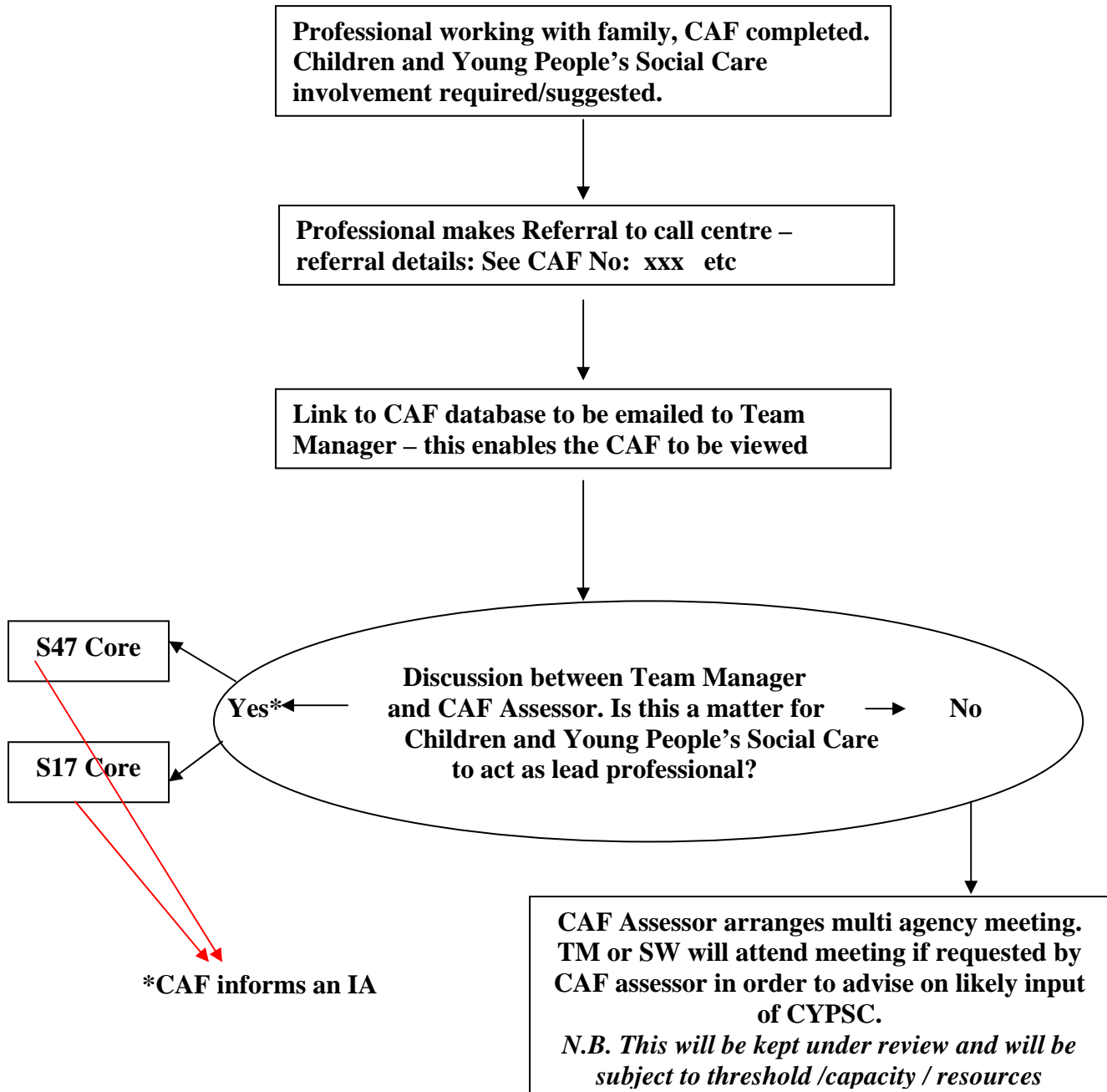
Jackie Goodwin Integrated Processes Co-ordinator

Jon Nevill, Service Manager, West Leeds

Diagram 1.

Process to be followed where a CAF Practitioner, having completed a common assessment, wishes to make a referral to Children and Young People's Social Care (CYPSC).

[1] Professional making referral to CYPSC, following completion of CAF:



2. Referrals to Children and Young People's Social Care following a Common Assessment.

2.1 At September 2007, 619 practitioners in Leeds , from a range of agencies, have been trained to complete common assessments. A list of these is provided at Appendix C.

2.2 A Practitioner will have completed the common assessment (CA) with a child or young person and their family. Through the process of this assessment the Practitioner, in some cases, will have identified that the child or young person will need to be referred to a 'Specialist Agency' - see Interagency Practice Guidance p20 and completed CAF, 'Planned Outcome'.

2.3 If Children and Young People's Social Care involvement is required, the Practitioner should refer that child or young person through Leeds City Council's Contact Centre in the normal way. The Contact Centre will take the basic details as per requirement, name, age, ethnicity, relationships ect. However in the 'Description' box of that referral the Contact Centre staff will accept 'See CAF, reference number XXX ' from that Professional. That referral will then be forwarded to the relevant Assessment Team to be accessed by the Duty Team Manager, as per usual practice.

2.4 The Duty Team Manager then has the responsibility, with support from Area Admin, to access that completed CA by directly accessing the CAF database. They should contact Joanne Mason or Jenny Wager on 0113 2795261

2.5 A link to the CAF database will then be emailed to the Duty Team Manager to enable them to view the CA. It is hoped within time there will be a direct link between ESCR and the CAF database so relevant information can be integrated into ESCR.

Once the completed CA has been accessed and its contents read and digested, the Team Manager should telephone the Assessor for further discussion. The Team Manager then decides whether the referral is accepted and whether an Initial assessment is to be completed.

2.6 If the CA is accepted as a piece of work to be further assessed via CYPSC the CA will inform the initial assessment. As is usual practice the child will have to be seen and an assessment of risk completed. This will then further determine whether the situation requires a Section 47 or a Section 17 Child in Need investigation and assessment.

2.7 On completion of the Initial Assessment if the decision is further assessment by CYPSC is needed the Team Manager will outcome the initial assessment as 'Core Assessment' as is usual. The Assessment Team will complete either a Section 17 Core Assessment, Child in Need or a Section 47 Core Assessment, Child Protection Enquiry. Our usual *Children's Procedures* will be adhered to when completing this work.

2.8 There will be other times when we may agree that the Child or Young Person has additional needs; however the Team Manager may make the decision that it does not meet the threshold for Social Care involvement. This part of the discussion with the CAF Assessor should link directly into the '*Guidance for Agencies in making a referral to Children and Young People's Social Care*' and the '*Priority Grid*'(both attached as Appendix A & B)
In this situation the case should return back to the CAF processes and to the responsibility of the CAF assessor.

2.9 If the CYPSC Team Manager's view is agreed, as in 2.8, it becomes the responsibility of the CAF Assessor to either arrange a Multi-Agency Meeting, as part of the CAF, or signpost onto a more appropriate agency. The Team Manager will then outcome the referral as 'No Further Action', but will record that discussion and action to be undertaken by CAF assessor under Activities of the Referral in ESCR. The Team Manager will need to record their reasons for not accepting the lead responsibility for carrying out further assessment or for arranging a multi-agency meeting. They should also ensure the CAF assessor is clear why social care are not continuing their involvement.

2.10 Where multi-agency meetings are held following a CAF, in some circumstances Children and Young People's Social Care will be asked to attend. Attendance at such a meeting will be in an advisory or consultative capacity and will not be any guarantee of Children and Young People's Social Care taking on lead responsibility for a case. Where attendance at a multi-agency meeting is requested, each request should be considered on merit. The team manager will need to decide whether they, or a social worker from their team, attends such a meeting. Reasons for attending include, for example, previous involvement with the child or their family, repeat referrals made to Social Care or because the concerns raised by the CAF assessor are borderline child protection or child in need issues.

2.11 There maybe cases whereby CYPSC input maybe required for short term family support i.e. limited payment of Section 17. In these cases it may be appropriate for there to be a CA and a coordinated plan of support as well as Social Work input but the Social Worker would not be the lead professional because of the short term involvement. Once Social Care input has ceased the CAF process may continue, with the co-ordinated "Team around the child" (TAC) remaining involved.

2.12 There will also be opportunity to use the CAF process when closing long term Child Protection and Family support cases. If the threshold for Social Care involvement is no longer met but the child and family would benefit from and agree to continuous multi-agency support then a transition to the CAF process can take place.

- At a Child Protection Conference where the decision is made that a Child Protection Plan is no longer needed and Social Care involvement will be ceasing a lead professional from an agency involved should be identified.
- At the final Social Care Family Support Meeting a lead professional from an agency involved should be identified.
- The lead professional will use the information obtained at the relevant meeting to complete a CA and an Action Plan. SW support maybe needed with this.
- Social Care's involvement will cease at this meeting.

2.13 Where a social worker or team manager attends a multi-agency meeting, the fact that they have undertaken this activity will be recorded as an activity in ESCR (under "referral").

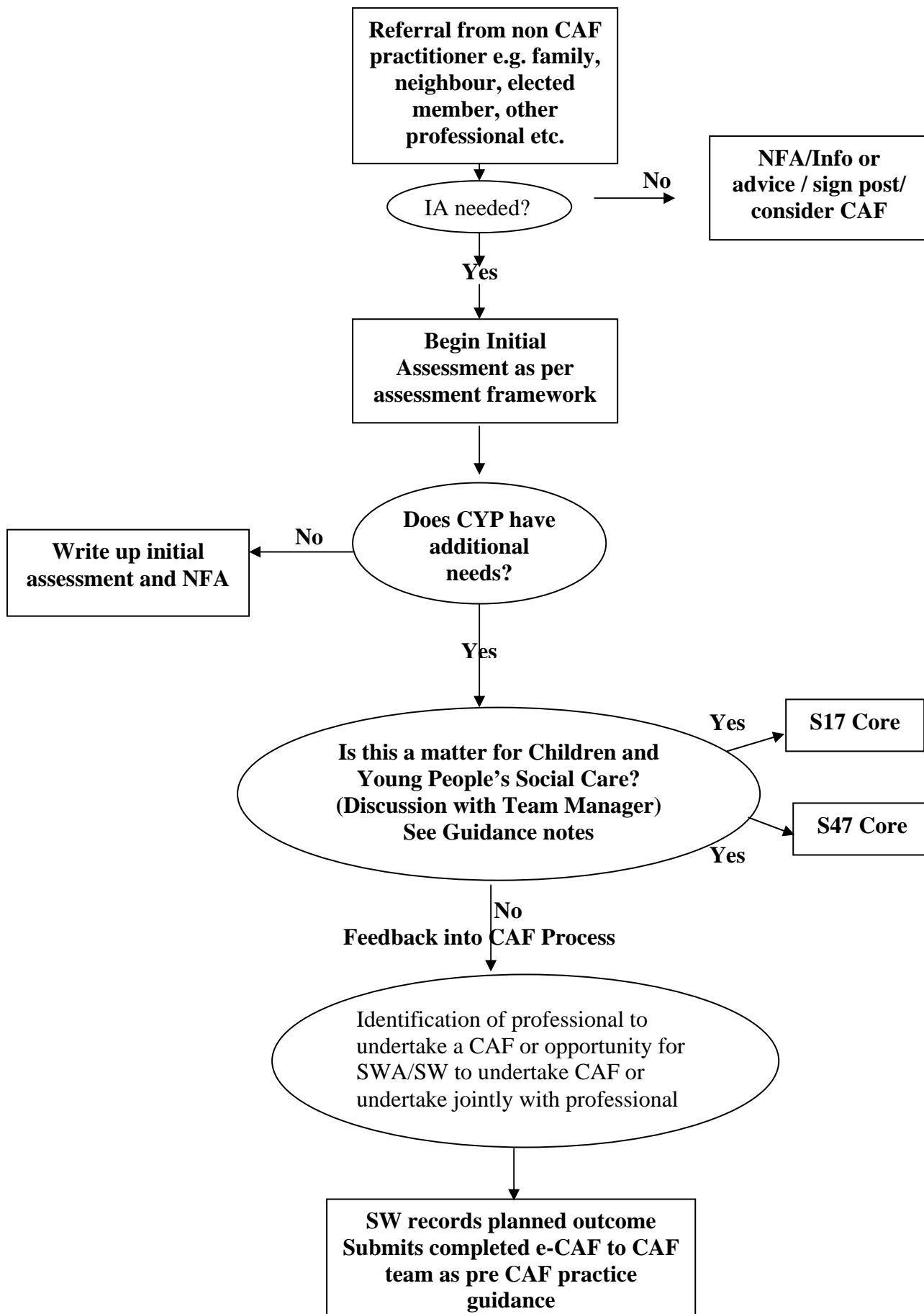
2.14 Social workers attending meetings should discuss the outcome from the meeting with their manager and this will also be recorded in ESCR.

2.15 Any team manager requiring further guidance on attendance at multi-agency meetings should discuss the matter with a Service Manager. Where there are disagreements over Children and Young People's Social Care role, further discussions should take place with more senior Manager in the respective agencies and or specific Integrated Processes Wedge Coordinators.

Diagram 2.

Process to be followed when receiving a referral from a non-CAF practitioner

[3] Referral from non professional or professional not accessing CAF



3. Process to be followed when receiving a referral from non professional or professional not accessing the Common Assessment framework

3.1 For the time being, until all professionals are completing CA's, the vast majority of Children and Young People's Social Care referrals will come via the usual referral routes. Therefore we should be processing referrals and completing Initial Assessments (IA) in the usual manner. Refer to *Children's Procedures 1.1: Assessment of Children*.

It is also important to note here that not all children will have a Common Assessment. If a child is progressing well a Common Assessment will not be undertaken. Therefore, there will be incidents whereby Social Care will receive referrals regarding children where a Common Assessment will not have been undertaken; For example if a child has made a disclosure, been assaulted or there has been a rapid deterioration in a situation.

3.2 Further to this, non professionals, e.g. family members, members of the public and also Elected Members, police etc will not be using the Common Assessment Framework and will continue to make referrals in the usual manner. Again we should be completing Initial Assessments as set out in the above *Children's Procedures*.

3.3 An important note to be made for all CYPSC staff, if either a non professional or Professional has any concerns which are in relation to Children in Need or of a Child Protection nature, then our own *Children's Procedures* should be adhered to without exception.

3.4 On receipt of a referral as usual the Team Manager will make the decision whether to accept the referral and outcome for an Initial Assessment or will outcome No further Action / Information and Advice given and sign post. If the outcome is NFA by Social Care the Team Manager should consider whether a CAF may benefit the family. If appropriate this should be discussed with the family. If a CAF is felt to be appropriate then Team Manager or Social Worker should advise the family or referrer, if a professional, to request a CA be undertaken by a CAF trained professional they already have contact with i.e. within school or nursery. This maybe the original referrer. If an appropriately trained professional cannot be identified support can be sought from the appropriate wedge IPC.

3.4 If the outcome of a referral is an IA and the IA has been completed, but not given an outcome, the CYPSC staff member will discuss with their Team Manager the outcome of that assessment. On completion of that discussion there will be three potential outcomes:

[1] The Initial Assessment is completed and there are no further needs for that child. The Initial Assessment will be recorded in the usual way and recorded on ESCR accordingly.

[2] The Initial Assessment is completed and there are additional social care needs for that CYP which meet the threshold for Social care involvement and will be met via CYPSC Core Assessment route, either S47 or S17. The usual *Children's Procedures* will be adhered to and the Core Assessments recorded on ESCR.

[3] The Assessment is completed, there are additional needs for that CYP but these do not meet the threshold for social care involvement and would be better met by one or more other agencies i.e. they are not a Child in Need or the concerns are not of a Child Protection Nature. (Refer to Priority Grid, Appendix A, for further details)

At this point the outcome of the 'Initial' Assessment activity on ESCR will be a CA. This should be discussed with the family, child or young person. If they provide consent for a CA then the Social Worker should attempt to identify a professional involved with the family who is trained to complete a CA. Once a professional has been identified, the Social Worker should share with them the IA completed and share all relevant information. Agreement should be sort that a CAF will be completed by the identified practitioner. The name of the professional who had agreed to undertake the CA should be recorded on ESCR. If Social Care staff cannot either identify an appropriate professional to undertake the CA or cannot obtain an agreement from a professional that they will complete the CA support can be sought from the appropriate wedge IPC.

If capacity permits, and the completion of a Common Assessment by an appropriately trained Social Worker or Social Work Assistant is possible then they can undertake a Common assessment and record it on the CAF database. Or a CA can be completed jointly by a SW or SWA and another professional. This will benefit the development of the CAF process and enhance Integrated Working and should be encouraged where at all possible. The decision as to whether a Social Worker or a Social Work Assistant undertakes a Common Assessment lies with their team manager.

3.6 If the outcome of the CA is a multi-agency meeting it maybe that due to original involvement by Social Care they maybe asked to attend the meeting. Attendance at such a meeting will be in an advisory or consultative capacity and will not be any guarantee of Children and Young People's Social Care taking on lead responsibility for a case. Where attendance at a multi-agency meeting is requested, each request should be considered on merit. The team manager will need to decide whether they, or a social worker from their team, attend such a meeting. Reasons for attending include, for example, previous involvement with the child or their family, repeat referrals had been made to Social Care or because the concerns raised by the CAF assessor are borderline child protection or child in need issues.

3.7 Any issues or difficulties with any aspects of the common assessment process should be raised in the first instance with a line manager. If managers are unable to resolve these difficulties, they may need to refer to a more senior manager in Children and Young People's Social Care or contact the IPC within their wedge in the first instance or the Integrated Processes Manager, Mary Armitage, direct. (Tel: 0113 2795261)

ENDS

Appendix A see next page

LEEDS CITY COUNCIL CHILDREN AND YOUNG PEOPLE'S SOCIAL CARE DEPARTMENT

PRIORITY GUIDANCE – CHILDREN'S COMMUNITY SERVICES

PROBLEMS AND ISSUES IN RELATION TO CHILDREN IN NEED									
	A. Abuse or Neglect	B. Child's Disability	C. Parental Illness /Disability	D. Family in Acute Stress	E. Family Dysfunction	F. Socially Unacceptable Behaviour	G. Low Income	H. Absent parenting	I. Cases Other than CIN
High Risk	A1 Risk of emotional, physical, sexual abuse and neglect.	B1 Serious unaddressed health problems	C1 Child to be looked after – no carer available due to <ul style="list-style-type: none"> • Abandonment • Death • Illness • Imprisoned 			F1 Child remanded to care of LA		H1 Unaccompanied child asylum seekers	
Substantial Risk	A2 Pre-birth assessment.	B2 Impairment to health and development due to <ul style="list-style-type: none"> • Illness • Physical disability • Learning disability • Mental health conditions • Emotional behavioural difficulties 	C2 Impairment to health and development due to <ul style="list-style-type: none"> • Parents are ill or disabled • Parents are alcoholic • Parents are using drugs • Parents have learning difficulties • Young carers 			F2 Child abusing Others		H2 Private fostering	I1 Section 37 reports
Moderate Risk	A3 Domestic violence, child present. A4 Involvement in prostitution.			D1 Loss of support networks important for care of the child D2 Homelessness D3 No money D4 Upheaval in family relationships	E1 Long term concerns about a lack of <ul style="list-style-type: none"> • Basic care and emotional warmth • Stimulation • Stable relationship with carer • Adequate boundaries and guidance 	F3 Child misusing drugs F4 Child misusing alcohol F5 Unsafe behaviour <ul style="list-style-type: none"> • Self harm • Runaways • Sexual F6 At risk of offending F7 Anti-social behaviour	G1 Asylum seeking families G2 Non-Habitually resident families		I2 Section 7 reports I3 Step-parent adoptions I4 Access to files I5 Historical allegations
Universal services									

LEEDS CITY COUNCIL CHILDREN AND YOUNG PEOPLE'S SOCIAL CARE DEPARTMENT

Guidance for Agencies in Making a Referral to Children and Young People's Social Care

Agencies are reminded that all referrals to the Children and Young People's Social Care Department should be confirmed in writing, including referrals in relation to S47, although the consent of parents/carers/child are not required for S47. Written confirmation should be sent on the day of the referral.

The guidance contained in 'What to do if you are worried a child is being abused', (www.dfes.gov.uk), clearly identifies the responsibility for deciding a referral should be classified as S47 rests with Children and Young People's Social Care and will follow discussion between the Department and referrer. It is possible that following further enquiries, the social work Team Manager reclassifies S47 referrals to S17. This decision will be forwarded to the referrer with 24 hours.

It is important that referring agencies discuss all S17 referrals with parents/carers and where appropriate the child/young person, and gives complete information. Good practice would be for the referrer to provide a copy of the referral to the parent/carer and child/young person as appropriate.

Children and Young People's Social Care staff are responsible for the decision about what action is to be taken. It is important, therefore, that full and good quality information is given to facilitate appropriate decision making. When referring a child/family, referrers need to be clear about:

- whether urgent action is needed to make the child safe from harm?
- whether there are any concerns and the nature of any concerns.
- how and why they have concerns, what is their foundation?
- what appears to be the needs of the child and family?
- the known history of the family.
- the discussion with the family and the agreement for the referral (unless the process of gaining agreement would put the child at risk).
- good practice would be to give the parent/carers a copy of the referral.

A referral will be accepted and prioritised as follows: -

Level 1 – High Risk

- the child/young person is at imminent risk of, or has suffered significant harm or is likely to suffer significant harm as a result of serious neglect, physical, sexual or emotional abuse.
- the child/young person is abandoned or lost or there is no person suitable to care for her/him.

An immediate response by Children and Young People's Social Care is required. This refers to all S47 referrals. Once a referral has been taken, National Assessment Framework Timescales apply.

If immediate protection is required, this will follow a strategy discussion between Children and Young People's Social Care and the police, with the involvement of other agencies as

appropriate. Where an agency has to act immediately to protect a child, the strategy discussion should take place as soon as possible to plan further action. Legal advice should be will before initiating legal action.

Level 2 – Substantial Risk

- where there are serious concerns about the care, health and development of a child/young person and/or there are serious concerns about family disintegration without the provision of services.

A planned response is required. This would be deemed a Child in Need referral (S17) and would include situations e.g. Children with Disabilities, drug misuse, mental health or behaviour problems indicating the concerns relating to the family and child.

The referral information should give some indication as to the gravity of the situation and the views of the child/family.

Level 3 – Moderate Risk

- the child or young person may need services to improve their quality of life and without the provision of services could move into Level 1 or 2.

Children and Young People’s Social Care response to all referrals will be based on evidence of assessed needs as presented by the referrer and upon their professional judgement and any previous history.

Where there is a request for intervention to improve or enhance the quality of life, but the child and carer are coping adequately, Appropriate advice, information and redirection to appropriate services will be offered.

The above clarification offers broad guidance and it is acknowledged that boundaries between the levels are not fixed and professional judgement during the referral and assessment process is necessary.

Children and Young People’s Social Care will inform the service user and referrer of any decision made in relation to a request for services. Referrers will be advised within 24 hours of receipt of the written referral form, of the initial decision taken in relation to the referral, using the attached form (Appendix 3).

Glossary of Terms

Section 17 Section 17(1) of the Children Act 1989 states that:

It shall be the duty of every local authority (in addition to other duties imposed on them by this part)-

- (a) to safeguard and promote the welfare of children within their area who are in need: and
- (b) so far this is consistent with that duty, to promote the upbringing of such children by their families, by providing a range and level of services appropriate to those children’s needs

Section 17(10) states that a child shall be taken to be in need if;

- (a) he is unlikely to achieve or maintain, or to have the opportunity of achieving or maintaining, a reasonable standard of health or development without the provision for him of services by a local authority under this Part;**
- (b) his health or development is likely to be significantly impaired, or further impaired, without the provision of such services; or**
- (c) he is disabled.**

Section 47 Section 47 (1) of the Children Act states that:

Where a Local Authority –

- (a) are informed that a child who lives, or is found in their area**
 - (i) is the subject of an emergency protection order: or**
 - (ii) is in police protection: or**
 - (iii) has contravened a ban imposed by a curfew imposed within the meaning of Chapter 1 of part 1 of the Crime and Disorder Act 1998:****or**
- (b) have reasonable cause to suspect that a child who lives, or is found in their area is suffering or is likely to suffer, significant harm, the authority shall make, or cause to be made, such enquiries as they consider necessary to enable them to decide whether they should take any action to safeguard or promote the child's welfare.**

LIST OF CAF PRACTITIONERS IN LEEDS by Wedge: @ Sept 2007
WEST

Surname	Forename	Agency	Contact Number
Ahir	Parwin	St Lawrence House Early Years Centre	0113 214 6001
Airey	Justine	Sure Start Bramley	0113 255 7755
Andrew	Jancis	Attendance Strategy Team	0113 256 0622
Armitage	Pat	Armley Moor Health Centre	0113 295 1278
Bakes	Judy	Sure Start Bramley	0113 255 7755
Bardsley	Kay	Attendance Strategy Team	0113 256 7528
Barker	Teresa	BARCA Leeds	0113 256 8711
Barrett-Teal	Christine	St Lawrence House Early Years Centre	0113 214 6001
Berry	Sarah	Education Leeds	07983 642874
Binks	Nigel	BARCA Leeds	0113 220 9784 07834 621116
Blake	Vicky	Sahara, Leeds Housing Concern	0113 245 8487
Bowles	Sheila	Wildfire	0113 236 1128
Bradley	Nicola	Education Leeds - Psychology & Assessment Service	0113 395 1099 ext 51193
Brice	Julie	West Leeds PCT	0113 295 3260 07960 727271
Briggs	Karen	Hollybush Primary School	0113 386 2474
Broadhurst	Sue	Sure Start Bramley	0113 255 7755
Brown	David	Intake High School Arts College	0113 229 5454
Brownsword	Mandy	Play Is SORTED BARCA Leeds	0113 256 8711
Bruce	Beverley	Calverley Church of England Voluntary Controlled Primary School	0113 214 6101
Buckton	Fiona	Thornton Medical Centre	0113 295 1233
Butterfield (2)	Yvonne	Armley Moor Children's Centre	0113 214 3539
Caldwell	Lorraine	Christ Church Upper Armley Church of England Voluntary Controlled Primary School	0113 214 3566
Calvert	Sharon	All Relative	0113 255 7755
Candeland	Tamsin	igen Leeds Careers	0113 226 2139
Cashman	Sue	CAMHS	0113 295 3491
Chaplin	Joanne	Raynville Primary School	0113 257 9590
Chin	Alison	Swinnow Primary School	0113 214 6080
Chitty	Anne	Sure Start Bramley	0113 255 7755
Clayton	Ann-Marie	igen Leeds Careers/Connexions	0113 229 5454 07738 212056
Cliff	Emma	Armley Primary School	0113 263 9216
Cliff	Laura	Sure Start Bramley	0113 255 7755
Clough	Yvonne	Wildfire	0113 236 1128
Cook	Pat	Summerfield Primary School	0113 205 7520
Craig	Sharon	Bramley Clinic	0113 295 1550
Crampton	Jill	Children's Services	0113 272 3759
Crosskill	Sallyann	BARCA Leeds	07756 950437
Crosthwaite	Beverley	Holy Family Catholic Primary School	0113 214 3565
Curtis	Nicola	Youth Offending Service	0113 395 0106
Day	Joanne	Bramley Clinic	0113 295 1550
Dix	Janice	BARCA Leeds	0113 255 3331

WEST: Surname	Forename	Agency	Contact Number
Donnelly	Kevin	Youth Service	0113 279 7406
Dowling	Cyndy	Home-Start Leeds	0113 244 2419 07921 523598
Duggan	Sean	Education Leeds	07891 270346
Durrans	Babs	Farsley Clinic	0113 295 3560
Dyson	Joanne	Farsley Springbank Junior School	0113 214 6098
Edwards	Christine	Attendance Strategy Team	0113 279 5259 07891 272331
Edwards	Tony	Youth Service	0113 279 7406
Evers	Sonia	YIP BARCA	0113 224 2013
Featherstone	Jennifer	Thornton Medical Centre	0113 295 1933
Flemming	Sophia	Education Leeds - Pupil Planning Team	0113 395 2119 07891 275168
Fox	Jane	Armley Moor Health Centre	0113 295 1288 07711 686420
Fozzard	Claire	St Lawrence House Early Years Centre	0113 214 6001
Garbutt	Kerry	0-16 Team/CAMHS	0113 295 3491
Gaunt	Gill	Sure Start Bramley	0113 255 7755
Gibbons	Bev	BARCA Leeds	0113 255 9582
Greenwood	Di	Wildfire	0113 236 1128
Gregory	Claire	Thornton Medical Centre	0113 295 1933
Gregson	Brenda	Pudsey Bolton Royd Primary School	0113 386 2560
Haigh	Sarah	Swinnow Primary School	0113 214 6080
Haigh	Wendy	Revolving Door	07984 008047
Hallsworth	Tracy	Armley Moor Children's Centre	0113 214 3539
Handley	Susan	St Bartholomew's C of E Voluntary Controlled Primary School	0113 263 9292
Harris	Janet	Whingate Primary School	0113 263 8910
Hart	Nick	BARCA Leeds	0113 255 9582 07960 788007
Hastie	Martin	Sure Start Bramley	0113 255 7755
Hayes	Pam	Bramley Children's Centre	0113 256 6354
Hemmens	Louise	Sure Start Bramley	0113 255 7755
Hewitt	Ann	Crawshaw School	0113 336 8540
Higgins	Dawn	Sure Start Bramley	0113 255 7755
Hill	Darren	BARCA/NHS PCT	0113 220 9788 07921 373710
Hitchenor	Rachel	Pudsey Health Centre	0113 295 1447
Hoggarth	Heather	Wildfire	0113 236 1128 07969 224670
Holdsworth	Kay	igen Leeds Careers	0113 225 9000
Hooson	Cindy	Youth Offending Service	0113 214 5662
Houghton	Lucy	School Nursing	0113 295 1288
Jackson	Gloria	Attendance Strategy Team	0113 256 0622
Jacobs	Pamela	Children & Young People Social Care	0113 247 5350
Jameson	Sally	Attendance Strategy Team	0113 256 0622
Johnson	Nicola	West Leeds High School	0113 263 3426
Jones	Graham	Castleton Primary School	0113 263 7756
Kilner	Gill	Raynville Primary School	0113 257 9590
Kirkwood	John	Five Lanes Primary School	0113 279 0122
Knaggs	Julie	St Lawrence House Early Years Centre	0113 214 6001
Law	Diane	BARCA Leeds	0113 220 9783 ext 304
Lister	Andrea	Armley Moor Children's Centre	0113 214 3539

Low	Sam	Out of School Activities Team (PAYP)	0113 276 0972 07891 274215
Machin	Claire	Westwood Primary School	0113 271 2420
Madzima	Mosslynn	Children & Young People Social Care	0113 247 4842
Marsh	Ben	Barnardo's Willow Young Carers Service	0113 240 8368
Marsh	Kara	Armley Moor Children's Centre	0113 214 3539
Matthew	Ivan	Attendance Strategy Team	0113 256 0622
Maybank	Jane	Sure Start Bramley	0113 255 7755
McDonald	Janet	West Leeds Pupil Development Centre	0113 263 8910
McDonnell	Karen	Children & Young People Social Care	0113 247 5334
McDougle	Janet	Greenhill Primary School	0113 263 5271
McHale	Linda	Youth Service	0113 231 9478 07891 275706
McMahon	Kathleen	Thornton Medical Centre	0113 295 1933
Metcalf	Mark	Youth Service	0113 231 9903
Metcalfe (1)	Sarah	Children & Young People Social Care	0113 247 4829
Metcalfe (2)	Sarah	Armley Moor Health Centre	0113 295 1278
Miah	Waish	Attendance Strategy Team	0113 274 6711
Mills	Wendy	Attendance Strategy Team	0113 256 0622
Mudunge	Monica	Armley Moor Health Centre	0113 214 3539
Mulvihill	Carrie	Bramley Clinic	0113 295 1550
Myers	James	NSPCC Leeds	0113 217 2200
Nadian	Tracey	Thornton Medical Centre	0113 295 1933
Newton	Emma	Education Leeds - Health Initiatives Teenage Pregnancy	0113 229 5454 07891 270448
Nichols	Nicky	Farsley Clinic	0113 295 3260
Noor	Zaheda	Sure Start Bramley	0113 255 7755
O'Connor	Mandy	BEST at Intake High School Arts College	0113 229 5454
Osborne	Jennifer	Barnardo's Willow Young Carers Service	0113 240 8368
Oxley	Deborah	Shakespeare Children's Centre	0113 336 8344
Palmer	Jackie	Intake High School Arts College	0113 229 5454
Parkin	Claire	Sure Start Bramley	0113 255 7755
Pashley	Jennifer	Lawns Park Primary School	0113 263 7364
Patrick	Krystyna	Attendance Strategy Team	0113 256 0622
Patrick	Lin	West Leeds Pupil Development Centre	0113 263 8910
Patterson	Lee	Wildfire	0113 236 1128 07868 716092
Patterson	Nancy M	Armley Moor Health Centre	0113 295 1288
Ratcliffe	Paul	Sure Start Bramley	0113 255 7755
Reed	Leon	Connexions West Yorkshire	0113 279 8500
Reid	Janine	Intake High School Arts College	0113 229 5454
Reindl	Lily	C.A.C.T.I.S.S.	0113 204 7800 07841 699619
Rhodes	Neil	Attendance Strategy Team	0113 256 0622 07891 272334
Richardson	Val	Hollybush Primary School	0113 386 2475
Riley	Andrea	Castleton Primary School	0113 263 7756
Roberts	Denise	Farnley Park High School	0113 263 0741
Robinson	Michelle	Children & Young People Social Care	0113 247 4842
Roe	Stephen	Education Leeds - Psychology & Assessment Service	0113 395 1193
Roper	Angie	Sure Start Bramley	0113 255 7755
Saville	Joanne	West Leeds Pupil Development Centre	0113 263 8910
Scholey	Sue	Sure Start Bramley	0113 255 7755
Scrimshaw	Kathryn	Thornton Medical Centre	0113 295 1933

Sellers	Amanda	Attendance Strategy Team	0113 256 0622
Shaw	Valerie	Raynville Primary School	0113 257 9590
Sheldon	Rachel	Armley Moor Children's Centre	0113 214 3539
Shute	Sally	Thornton Medical Centre	0113 295 1933
Simpson	Annie	BEST at Intake High School Arts College	0113 229 5454
Skidmore	Janet	Armley Moor Health Centre	0113 295 1288
Smith	Lindsey	Bramley Children's Centre	0113 256 6354
Smith	Maggie	Attendance Strategy Team	0113 224 4312
Smith	Siobhan	Early Years SEN Team	0113 395 1040
Speight	Tracy	Children & Young People Social Care	0113 247 5353
Spencer	Collette	Bramley Clinic	0113 295 4473
St Rose	Ian	Leeds Reach	0113 237 4489 0113 214 4033
Stewart	Jannine	Lawns Park Primary School	0113 263 7364
Tate	Margaret	Pudsey Health Centre	0113 295 1447
Tatham	Karen	Whitecote Primary School	0113 216 4800
Taylor	Jackie	West Leeds Pupil Development Centre	0113 263 8910
Taylor-Oates	Stephanie	Education Leeds	0113 395 1238
Thompson	Anne	Pudsey Health Centre	0113 295 1447
Tiffany	Karen	Ryecroft Primary School	0113 263 2433
Tindall	Karen	Thornton Medical Centre	0113 295 1933
Tomlin	Lucy	igen Leeds Careers	0113 229 6000 07738 212039
Tooley	David	Leeds West Homes	0113 247 6513
Tweed	Tracey	Whitecote Primary School	0113 216 4800
Valentine	Jacqui	St Joseph's Catholic Primary School	0113 256 5407
Wade	Tracy	Hollybush Children's Centre	0113 386 2473
Wager	Jenny	Leeds City Council	0113 279 5261
Walton	Julie	Bramley Clinic	0113 295 1550
White	Carol	Stanningley Primary School	0113 214 6108
Wickham	Yvonne	igen Leeds Careers	0113 225 9000
Wildman	Victoria	Pudsey Health Centre	0113 295 1447
Wilson	Angela	Armley Moor Health Centre	0113 295 1288
Wilson	Jackie	Armley Primary School	0113 263 9216
Wilson	Patricia	Raynville Primary School	0113 257 9590
Wood	Sheila	WLYIP - BARCA	0113 289 9259
Woodward-Chapman	Keely	Armley Moor Children's Centre	0113 214 3539
Wray	Nicola	Home-Start Leeds	0113 244 2419
Wrigglesworth	Amanda	Bramley Family Support Project	0113 236 0610
Young	Emma	Farsley Clinic	0113 295 3260
Zurowski	Emma	BARCA Leeds	0113 255 9582

LIST OF CAF PRACTITIONERS IN LEEDS By Wedge: @ Sept 2007

SOUTH:

Surname	Forename	Agency	Contact Number
Aftab	Sarwat	Hamara Healthy Living Centre	0113 277 3330
Ainge	Rebecca	South SILC - Broomfield	0113 277 1603 07739 912828
Appleyard	Anne	Early Years SEN Service - Portage	0113 395 1040
Ashton	Kirsty	Parkside Community Health Centre	0113 295 2827 07983 435175
Berryman	Angela	Joseph Priestley College	0113 307 6181
Blackburn	Trudy	Sure Start Middleton	0113 276 2386
Bower	Janet	Middleton Primary School	0113 271 7969
Bradley	Ann	Middleton Primary School	0113 271 7969
Broadhurst	Sarah	South SILC - Broomfield	0113 271 1246
Brookes	Amanda	Home-Start Leeds	0113 244 2419
Brough	Andrea	Middleton Family Centre	0113 277 8965
Burwell	Diane	Sharp Lane Primary School	0113 214 1702
Capes	Eleanor	Morley Health Centre	0113 295 4030
Carter	Jack	St Luke's Cares	0113 217 9393
Crowther	Yvonne	St Luke's Cares	0113 217 9393
Dalawar	Shakila	Sure Start Beeston Hill	0113 270 2288
Davis	Adele	Parkside Community Health Centre	0113 295 2825
Dawe	Helen	Middleton Children's Centre	0113 271 8213
Dawes	Helen	Home-Start Leeds	0113 244 2419
Devlin	Sharron	Hunslet Children's Centre	0113 270 7001
Folker	Dawn	Youth Offending Service	0113 214 5300
Freeman	Dawn	Keyworker Team	0113 206 3479
Gani	Anhar	Hamara Healthy Living Centre	0113 277 3330
Gibson	Paula	Attendance Strategy Team	0113 336 8456
Gill	Deborah	Leeds PCT	0113 282 0520
Grant	Cassandra	Attendance Strategy Team	0113 239 3249
Gration	Lynda	New Beverley Community School	0113 336 8250
Green	Kirsty	Hunslet Moor Primary School	0113 271 7257
Greenwood	Ann	New Beverley Children's Centre	0113 336 8255
Hainsworth	Joanne	Cockburn College of Arts	0113 270 7451
Hall	Alison	Early Years, Learning & Leisure	0113 246 8700 07891 272700
Hands	Liz	Hunslet Moor Primary School	0113 271 7257
Harker	Charlotte	New Beverley Children's Centre	0113 336 8255
Harrison	Hazel	Parkside Community Health Centre	0113 295 2823
Harrison	Joanne	Rose Farm Early Years Centre	0113 282 2319
Heaton	Kathryn	Education Leeds - Health Initiatives Team	07891 270451
Helm	Kate	Attendance Strategy Team	0113 252 4812
Hemsley	Julie	Early Years	0113 247 6803
Herbert	Julie	New Beverley Community School	0113 336 8250
Hewson	Maggie	Beeston Primary School	0113 271 6978
Hodge	Maureen	Rothwell Primary School	0113 386 2570
Holstead	Rowena	Home-Start Leeds	0113 244 2419
Horsley	Alison	Learning & Leisure	0113 270 6166
Hudson	Margaret	Attendance Strategy Team	01924 871630
Irwin	Tessa	Education Leeds - Parent Partnership Service	0113 395 1224 07891 275500

Jarrett	Janette	South Leeds High School	0113 336 8448
Johnson	Keeley	Middleton Children's Centre	0113 214 1924
Judkins	Paul	St Luke's Cares	0113 217 9393
Kemecsei	Eva	Barnardo's Willow Young Carers Service	0113 240 8368
Kitching	Abbie	Sure Start Middleton	0113 276 2386
Kousar	Naheed	Beeston Hill Children's Centre	0113 270 8889 07891 275852
Kuhnert	Kerstin	Sure Start Beeston Hill	0113 270 2288
Langstaff	Claire	Cross Flatts Park Primary School Ingram Road Primary School	0113 271 6754 0113 245 6136
Levy	Petra	igen Leeds Careers	0113 226 2127
Lindley	Lisa	Middleton Children's Centre	0113 271 4706
Lowrey	Gillian	Gildersome Primary School	0113 214 5426
MacNay	Lorraine	Woodkirk High Specialist Science School	0113 336 8140
McEvoy	Louise	Education Leeds - Pupil Planning Team	0113 395 2129
McGlinchey	Sarah	Positive Activities For Young People (PAYP)	0113 276 0972 07891 270976
McMullen	Yvonne	Hunslet Carr Primary School	0113 271 3804
Megson	Louise	St Luke's Cares	0113 217 9393 07932 653934
Millar	Tammie	New Beverley Children's Centre	0113 336 8255
Miller	Geraldine	Children & Young People Social Care	0113 247 7117
Moorcroft	Jackie	Rose Farm Early Years Centre	0113 282 2319
Morris	Michelle	Sure Start Beeston Hill	0113 270 2288
Moulson	Lindsay	Hunslet Health Centre	0113 277 1811
Murray	Jenny	BEST	0113 277 7966
Murray	Kath	Middleton Primary School	0113 271 7969
Nix	Christine	Windmill Primary School	0113 271 2115
Okpala	Rita	Children & Young People Social Care	0113 214 1888
Parker	Julie	Attendance Strategy Team	07891 272296
Pater	Ellie	St Luke's Cares	0113 217 9393
Paterson	Hedge	Attendance Strategy Team	0113 274 6755 07891 272321
Petersdorfer	Kathrin	Joseph Priestley College	0113 307 6183
Pitts	Julie	Attendance Strategy Team	07891 272287
Pollard	Joy	igen Leeds Careers	0113 225 9000 07738 212026
Pritchard	Juliet	Sure Start Beeston Hill	0113 270 2288
Proctor	Janet	South Leeds High School	0113 336 8448
Quinn	Jenny	Beeston Hill Children's Centre	0113 336 8255 07891 275855
Rigden	Claire	Beeston Primary School	0113 271 6978
Robb	Jackie	Ingram Road Primary School	0113 245 6136
Robinson	Michael	Attendance Strategy Team	0113 239 3249
Roche	Nicole	Sure Start Beeston Hill	0113 277 7723
Ross	Joanne	Two Willows Children's Centre	0113 270 6166 07891 275850
Sexton	Clair	St Anthony's Catholic Primary School	0113 214 1700
Shan	Tazeem	Sure Start Beeston Hill	0113 270 2288
Sharp	Rod	Sure Start Middleton	0113 276 2386
Sharp	Russell	Education Leeds - Psychology & Assessment Service	0113 395 1076
Simmons	Angie	Early Years SEN Service	0113 395 1040
Slaney	Clare	Children & Young People Social Care	0113 214 1716
Stanley	Tracey	Attendance Strategy Team	0113 271 6652

Stones	Shirley	Parkside Community Health Centre	0113 295 2828
Storey	Cath	Low Road Primary School	0113 214 1704
Sunderland	Joanne	St Luke's Cares	0113 217 9393
Teoli	Gillian	Parkside Community Health Centre	0113 295 8234 07983 435189
Thompson	Kathryn	igen Leeds Careers	0113 225 9000
Thomson	Angela	Sure Start Middleton	0113 276 2386
Thornton	Christine	Health	0113 295 4600
Thorpe	Susan	Rothwell Health Centre	0113 282 0520
Tittel	Luise	Sure Start Beeston Hill	0113 277 7723
Underwood	Sharon	Parkside Community Health Centre	0113 295 2885
Walker	Louise	New Beverley Children's Centre	0113 336 8255 07891 273144
Wall	Jay	School Nursing	0113 295 4600
Walters	Troy	Children & Young People Social Care	0113 247 7121
Watson	Pauline	Windmill Children's Centre	0113 214 1759
Watts	Eleanor	Sure Start Middleton	0113 214 1888
Westwood	Polly	Sure Start Beeston Hill	0113 270 2288
Wheat	Alex	Signpost	0113 277 6357 07891 271035
Whitehead	Sue	Sure Start Middleton	0113 276 2386
Williams	Julie	Beeston Hill Children's Centre	0113 270 8889
Williams	Sam	Middleton Primary School	0113 271 7969
Wilson	Andy	Youth Service	0113 277 4315 07891 279983
Wilson	Michelle	Cross Flatts Park Primary School	0113 271 6754
Wilton	Joan	Attendance Strategy Team	07891 272312
Winn	Caroline	Hunslet Children's Centre	0113 270 7001
Woodland	Sarah	Ingram Road Primary School	0113 245 6136
Worsley	Caroline	Parkside Community Health Centre	0113 295 2887
York	Donna	Joseph Priestley College	0113 307 6193

LIST OF CAF PRACTITIONERS IN LEEDS By Wedge: @ Sept 2007

NORTH WEST:

Surname	Forename	Agency	Contact Number
Adam	Sara	The Children's Society - Little London Children's Centre	0113 245 8480
Baran	Adele	Education Leeds	0113 288 3540 07891 270449
Blunn	Sandra E	Bramhope Primary School	0113 214 1037
Brown	Kate	Leeds Women's Aid	07919 212611
Cashman	Sue	CAMHS	0113 295 3491
Clarke	Christine	Abbey Grange Church of England High School	0113 275 7877
Cluderay	Nyree	Connexions Youth Point	0113 274 9959
Conner	Laura	igen Leeds Careers	0113 225 9000 07738 212041
Daley	Janet	The Children's Society - Little London Children's Centre	0113 245 8480
Dixon	Tracey	Quarry Mount Children's Centre	0113 242 8616 07891 273140
Draper	Pat	School Health	0113 305 9032
Ellwood	Karen	Social Services	0113 247 5678
Fletcher	Anne	Youth Service	0113 244 6808 07891 271011
Garbutt	Kerry	0-16 Team/CAMHS	0113 295 3491
Goodwin	Jackie	Children & Young People Social Care	0113 279 5261 07891 276170
Goodwin	Sarah	Ralph Thoresby High School	0113 225 9911
Grant	Sarah	The Children's Society - Miles Hill Bungalow	0113 269 1566
Green	Maria	Queensway Primary School	01943 874925
Hicks	Carmel	Queensway Primary School	01943 874925
Hooson	Cindy	Youth Offending Service	0113 214 5662
Hull	Lindsey	Education Leeds - Pupil Planning Team	0113 395 1183
Hynes	Angela	Bright Beginnings	0113 343 1818
Kerr	Joanna	The Children's Society - Little London Children's Centre	0113 245 8480
Kirkby	Christine	The Children's Society - Miles Hill Bungalow	0113 269 1566
Laycock	Helen	Cookridge Primary School	0113 386 2500
Lennon	Michelle	Children & Young People Social Care	0113 247 7446
Lindsay	Vicky	Connexions Youth Point	0113 274 9959
Llewellyn	Deborah	Quarry Mount Children's Centre	0113 242 8616
Low	Sam	Out of School Activities Team (PAYP)	0113 276 0972 07891 274215
Marks	Nicola	The Children's Society - Quarry Mount Children's Centre	0113 214 1546
Mazza	Shirley	Guiseley School Technology College	01943 882338
Metcalfe	Lynda	St Mary's Catholic Comprehensive School, Menston	01943 883000
Midgley	Melanie	The Children's Society - Miles Hill Bungalow	0113 269 1566
Orchard	Roger	Youth Offending Service	0113 214 5668
Osborne	Jennifer	Barnardo's Willow Young Carers Service	0113 240 8368
Parker	Reece	Attendance Strategy Team	0113 274 6711 07891 272307
Patrick	Ann	Prince Henry's Grammar School, Otley	01943 463524
Perfitt	Alison	Guiseley Infant and Nursery School	01943 873359
Philp	Jill	The Children's Society - Miles Hill Bungalow	0113 269 1566
Pollard	Gail	Ireland Wood Primary School	0113 267 8032

Price	Helena	The Children's Society - Little London Children's Centre	0113 245 8480
Ragan	Denise	Youth Service	0113 244 5259 07891 270997
Redshaw	Kirsten	The Children's Society - Quarry Mount Children's Centre	0113 214 1546
Richards	Tamson	Attendance Strategy Team	0113 274 6711 07891 272313
Richardson	Sarah	Little London Children's Centre	0113 214 5111
Ripley	Debbie	The Children's Society - Quarry Mount Children's Centre	0113 214 1546
Sanders	Mary	Leeds PCT	01943 850182
Shott	Miriam	Leeds Reach	0113 237 4489
Showell-Nicholas	Wendy	The Children's Society - Little London Children's Centre	0113 245 8480 07891 835446
Slater	Sara	The Children's Society - Miles Hill Bungalow	0113 269 1566
Smailes	Lisa	7 Day Response Team, North West	07881 591445
Smith	Hayley	Little London Children's Centre	0113 214 5111
Smith	Siobhan	Early Years SEN Team	0113 395 1040
Stansfield	Sheila	Attendance Strategy Team	01943 463524 07891 272309
Stokey	Patricia	Prince Henry's Grammar School	01943 855691
Taylor-Oates	Stephanie	Education Leeds	0113 395 1238
Tooley	David	Leeds West Homes	0113 247 6513
Town	Deborah	Little London Children's Centre	0113 214 5111
Turner	Hilary	Ireland Wood Children's Centre	07891 276076
Vernon	Riain	Ralph Thoresby High School	0113 225 9911
Watson	Pam	Children & Young People Social Care	0113 247 7409
Webster	Frances	Burley Children's Centre	0113 289 9807
Welsh	Yvona	Little London Children's Centre	0113 214 5111
Winterhalder	Sue	Early Years	0113 395 1040

LIST OF CAF PRACTITIONERS IN LEEDS By Wedge: @ Sept 2007

NORTH EAST:

Surname	Forename	Agency	Contact Number
Azevedo	Tatiana	Home-Start Leeds	0113 244 2419
Baran	Adele	Education Leeds	0113 288 3540 07891 270449
Bays	Susan	Leeds PCT	0113 295 3560
Belgrave	Brenda	Chapelton Children's Centre	0113 214 5878
Bennett	Sarah	Chapelton Children's Centre	0113 200 7969 07985 805087
Bristow	Debbie	Lady Elizabeth Hastings' Church of England Primary School, Thorp Arch	01937 842566
Brooks	Michaela	CAMHS	0113 293 6090
Browne	Diane	0-16 Team/CAMHS	0113 293 6090 07949 102470
Canlett	Nikki	Scott Hall Early Years Centre	0113 262 3592
Clarke	Charlene	Pupil Development Centre	0113 240 9416
Dabill	Caroline	Moor Allerton Hall Primary School	0113 266 3431
Fry	Joy	Attendance Strategy Team	0113 274 6711 07891 272305
Hall	Lucy	Behaviour & Education Support Team (BEST)	07931 365718
Hardy	Paula	Chapelton Children's Centre	0113 200 7962
Harris	Jenny	Learning Partnerships	0113 380 6662 07814 930961
Herah	Rossan	Education Leeds - Psychology & Assessment Service	0113 395 1216
Hindle	Lucy	Chapelton Children's Centre	0113 214 5880
Hooson	Cindy	Youth Offending Service	0113 214 5662
Hughes	Fiona	Hovingham Pupil Development Centre	0113 240 9416
Hull	Lindsey	Education Leeds - Pupil Planning Team	0113 395 1183
Jeffers	Tanya	REEMAP	0113 380 4520
Jeffrey	Yvonne	Behaviour & Education Support Team (BEST)	0113 293 9909 07931 365844
Laxton	Rosemary	Sure Start Chapelton	0113 200 7969
Lennon	Michelle	Children & Young People Social Care	0113 247 7446
Lenton	Helen	Grimes Dyke Primary School	0113 294 1066
Lewis	Dawn	Sure Start Chapelton 7 Day Response Team	0113 200 7969
Li	Jane	Home-Start Leeds	0113 244 2419
Lines	Julie	Pupil Development Centre	0113 240 9416
Lister	Katie	Education Leeds - Psychology & Assessment Service	0113 395 1076
McNulty	Angela	Early Years SEN Service	0113 395 1040 07891 272516
McShane	Philomena	Behaviour & Education Support Team (BEST)	0113 395 1184
Odu	Jo	Extended Services	0113 336 8407
Orchard	Roger	Youth Offending Service	0113 214 5668
Parker	Reece	Attendance Strategy Team	0113 274 6711 07891 272307
Payne	Laura	Behaviour & Education Support Team (BEST)	0113 395 1184
Phillips	Susan	Hillcrest Primary School	0113 262 4080 07847 610079
Scott	Sandra	Attendance Strategy Team	07891 272284
Shatwell	Sylvia	Sure Start Chapelton 7 Day Response Team	0113 200 7955 07985 806076
Sheard	Sharon	Chapel Allerton Children's Centre	0113 395 2410

Shott	Miriam	Leeds Reach	0113 237 4489
St Rose	Ian	Leeds Reach	0113 237 4489 0113 214 4033
Tierney	Sharon	7 Day Response Team	0113 200 7969
Van Rossum	Sandra	Gipton Clinic	0113 295 3560
Wason	Lisa	Hovingham Pupil Development Centre	0113 240 9416
Watson	Pam	Children & Young People Social Care	0113 247 7409
Whyles	Sandra	Neighbourhood and Housing	0113 247 7305
Winston	David	Attendance Strategy Team	07891 272318

LIST OF CAF PRACTITIONERS IN LEEDS By Wedge: @ Sept 2007
EAST:

Surname	Forename	Agency	Contact Number
Adams	Jackie	Seacroft Clinic	0113 295 1060
Ade	Margaret	Kippax Health Centre	0113 287 4427
Ali	Nazia	Signpost	07966 930958
Asadullah	Nasrin	Children & Young People Social Care	0113 214 3397
Attmere	Michelle	Meadowfield Children's Centre	0113 336 8015
Bailey	Bernadine	Seacroft Clinic	0113 295 1060
Barnes	Sarah J	Seacroft Clinic	07985 803880
Bates	Jo	St Nicholas Catholic Primary School	0113 293 0318
Bays	Susan	Leeds PCT	0113 295 3560
Bell	Ruth	Park Edge Practice	0113 295 4876
Bhachu	Narinder	CHIVA	0113 225 8915
Bradford	Joanne	Youth Offending Service	0113 214 1369
Britten	Angela	igen Leeds Careers	0113 336 8100
Britton	Lindsay	Burmantofts Health Centre	0113 295 3670
Brosnan	Sarah J	Garforth Clinic	0113 286 3429
Brown	Sarah	Methley Primary School	0113 386 2544
Browne	Diane	0-16 Team/CAMHS	0113 293 6090 07949 102470
Butterfield	Yvonne	Early Years	0113 247 6823 07891 271042
Carbone	Victoria	Children & Young People Social Care	0113 247 8859 07816 525856
Causar	Claire	School Health	0113 286 3429
Cheek	Heidi	School Nursing	0113 295 1470
Clarkson	Sue	Meadowfield Primary School	0113 336 8010
Cook	Judith	Education Leeds	0113 293 4411
Core	Victoria	Seacroft Clinic	0113 295 1204
Crann	Tracey	Henry Barran Early Years Centre	0113 232 3535
Darnbrough	Dorothy	Temple Moor High School Science College	0113 336 8209
Davis	Gillian	St Benedict's Catholic Primary School	0113 214 6821
Davison	Keeley	Harehills Children's Centre	0113 214 3023
Dean	Gayle	igen Leeds Careers	0113 225 9000
Denton	Christine	All Saint's Richmond Hill Church of England Primary School	0113 214 3056
Donnelly	Lisa	Children & Young People Social Care	0113 214 3091
Edwards	Sarah	Education Leeds - Health Initiatives Team	07891 270451
Elliott	Sharon	Youth Service	07891 270988
Enoch	Alison	The Bridge Centre (MAST)	0113 293 0282
Forrest	Sharon	East Leeds Clinic	0113 293 7941
Foxton	Graham	Temple Moor High School Science College	0113 336 8200
Goodison	Ian	Multi Agency Support Team (MAST)	0113 390 1166
Green	Alan	Behaviour & Education Support Team (BEST)	0113 249 1598 07931 365830
Green	Marsha	Sure Start Harehills	0113 295 1595
Greenwood	Anne	Meadowfield Children's Centre	0113 336 8015
Groves	Paula	Park Edge Practice	0113 295 4877
Grundy	Dorrice	Early Years	07891 279091
Hall	Lucy	Behaviour & Education Support Team (BEST)	07931 365718
Hallam	Sue	Seacroft Clinic	0113 295 1060
Hardy	Paula	Chapelton Children's Centre	0113 200 7962
Herbert	Rebecca	Multi Agency Support Team (MAST)	0113 390 1166

Hill	Louise	Attendance Strategy Team	07891 272291
Holstead	Rowena	Home-Start Leeds	0113 244 2419
Hope	Dan	Children & Young People Social Care	0113 214 3095
Horsley	Louise	Attendance Strategy Team	0113 274 6711 07891 270315
Hunter	Carol	Meadowfield Children's Centre	0113 336 8015
Jackson	Charlotte	Children & Young People Social Care	0113 214 3401
Jeffrey	Yvonne	Behaviour & Education Support Team (BEST)	0113 293 9909 07931 365844
Jones	Karen	Oakwood Primary School	0113 240 2526
Kalischer	Pat	Kentmere Early Years Centre	0113 214 4126
Kear	Barbara	Seacroft Children's Centre	0113 214 4224
Keeble	Carol	Shakespeare Children's Centre	0113 336 8344
Kemecsei	Eva	Barnardo's Willow Young Carers Service	0113 240 8368
Khan	Saba	7 Day Response	0113 295 1595
Knight	Susan	Victoria Primary School	0113 248 2449
Lenton	Helen	Grimes Dyke Primary School	0113 294 1066
Lewis	Dawn	Sure Start Chapeltown 7 Day Response Team	0113 200 7969
Li	Jane	Home-Start Leeds	0113 244 2419
Lloyd	Julie	Multi Agency Support Team (MAST)	0113 224 3103
Lyth	Jan	Children & Young People Social Care	0113 214 3400
Madhvani	Sona	igen Leeds Careers	0113 248 2666
Marling	Marie	Meadowfield Children's Centre	0113 336 8015
Marshall	Elaine	Children & Young People Social Care	0113 247 8644
Martin	June	Youth Service	0113 214 3408 07891 271036
Mattinson	Anne	School Nursing	0113 295 1470
McBurnie	Mark	The Bridge Centre (MAST)	0113 293 0282
McGrath	Joanne	Meadowfield Primary School	0113 336 8010
McNulty	Angela	Early Years SEN Service	0113 395 1040 07891 272516
McShane	Philomena	Behaviour & Education Support Team (BEST)	0113 395 1184
Meek	Sarah	Youth Offending Service	0113 214 1369
Mehta	Dee	The Bridge Centre (MAST)	0113 293 0282
Metcalfe	Tracy	igen Leeds Careers	0113 225 9000
Mirza	Julie	East Leeds Clinic	0113 295 1484
Murly	Graham	Attendance Strategy Team	07891 272314
Oakes	Samantha	Shakespeare Children's Centre	0113 336 8344
O'Farrell	Bernadette	Park Edge Practice	0113 295 4129
O'Hara	Caroline	Sure Start Harehills	0113 295 1595
Payne	Laura	Behaviour & Education Support Team (BEST)	0113 395 1184
Payton	Helen	Education Leeds - Pupil Planning Team	0113 395 2116
Peats	Caro	NCH Broomhill Family Centre	0113 235 0879
Rathmell	Tilly	Home-Start Leeds	0113 244 2419
Ridsdale	Jan	Education Leeds - Psychology & Assessment Service	0113 395 1195
Riley	Julie	Seacroft Clinic	0113 295 1060
Rushworth	Susan	Sure Start Seacroft	0113 214 4224
Slatcher	Samantha	Early Years	07891 275847
Smith	Mark S	Youth Service	07891 278023
Smyth	Lesa	NCH Broomhill Family Centre	0113 235 0877
Spofforth	Nicola	Kentmere Children's Centre	0113 214 4126
Stead	David	Children & Young People Social Care	0113 214 3090
Sunter	Liz	St Nicholas Catholic Primary School	0113 293 0318
Swift	Kerry	Education Leeds - Health Initiatives Teenage Pregnancy	07891 270450

Taylor	Vicky	Attendance Strategy Team	0113 204 4150 07891 272320
Tierney	Sharon	7 Day Response Team	0113 200 7969
Tomlinson	Joanne	Seacroft Children's Centre	0113 214 4224
Toor	Jaswant	Home-Start Leeds	0113 244 2419
Twitchett	Joanne	Richmond Hill Children's Centre	0113 240 0564
Van Rossum	Sandra	Gipton Clinic	0113 295 3560
Waddington	Nicola	Seacroft Children's Centre	0113 214 4224
Watson	Vicki	Multi Agency Support Team (MAST)	0113 390 1166
Wheat	Alex	Signpost	0113 277 6357 07891 271035
Whittleston	Barbara	East Ardsley Primary School	0113 386 2510
Winter	Claire	Doreen Hamilton Early Years Centre	0113 249 7054

LIST OF CAF PRACTITIONERS IN LEEDS @Sept 2007 – City Wide Services:

Surname	Forename	Agency	Contact Number
Adams	Kristiana	Connexions - The Learning Agreement Pilot	07825 019165
Allotey	Jennifer	NCH Broomhill Family Centre	0113 235 0877
Ball	Christina	Attendance Strategy Team	0113 224 4312 07891 272330
Barnes	Loretta	Barnardo's Willow Young Carers Service	0113 240 8368
Barrett	Suzanne	Base 10	0113 243 3552
Belford	Michael	Attendance Strategy Team	07891 272301
Bernard-Ferguson	Angela	Education Leeds - Parent Partnership Service	0113 395 1222 07891 275700
Bright	Georgina	Youth Service	0113 274 4955 07891 274074
Burdon	Chris	igen Leeds Careers	0113 225 9000
Burgess	Sally	Connexions - The Learning Agreement Pilot	07825 019182
Busfield	Daniel	Positive Futures	0113 274 7613 07891 275345
Carlin	Emma	Connexions - The Learning Agreement Pilot	0113 248 2816 07920 007217
Cassidy	Alison	Connexions - The Learning Agreement Pilot	0113 380 6662
Chadband	Diane	igen Leeds Careers	0113 225 9000 ext 2173
Choda	Jasbir	igen Leeds Careers	07738 212028
Clarkson	Craig	Connexions - The Learning Agreement Pilot	07825 019167
Clegg	Lindsay	Connexions - The Learning Agreement Pilot	07920 007218
Cooper	Georgia	Getaway Girls	0113 240 5894
Coward	Helyn	Beeston Hill Children's Centre	0113 245 9753
Crackle	Samantha	Education Leeds - Psychology & Assessment Service	0113 395 1186
Cunningham	Michelle	Education Leeds - ABC Leeds	0113 214 4033
Cuthbert	Janet	Education Leeds - Visually Impaired Team	0113 395 1111
Cyrowski-Johnson	Krystyna	Early Years SEN Service	0113 395 1040
Davenport	Sheila	Barnardo's Willow Young Carers Service	0113 240 8368
Dawson	Sally	The Market Place	0113 246 1659
Elliott	Martina	NCH Broomhill Family Centre	0113 235 0877
Etherton	Lu	Base 10	0113 243 3552
Ford	Rachel	Activity Agreement Pilot (Leeds YS and Connexions)	0113 279 8500 07920 007216
Garratt	Lesley	Beeston Hill Children's Centre	0113 245 9753
Gathercole	Katie	Education Leeds - Parent Partnership Service	0113 395 1224
Gavins	Bernard	Connexions West Yorkshire	0113 248 2816 07920 007214
Gerrard Brown	Rowenna	Elmete Central BESD SILC	0113 265 5457
Gledhill	Keith	Connexions - The Learning Agreement Pilot	01535 674990 07825 019169
Gold	Sue	Education Leeds - Travellers Education Service	0113 274 8050
Griffiths	Fran	Children & Young People Social Care	0113 395 1617
Gumbs	Terence	Connexions - The Learning Agreement Pilot	07920 007215
Itzinger	Sue	Education Leeds - Travellers Education Service	0113 274 8050
James	Zainab	Education Leeds - Travellers Education Service	0113 274 8050
Jeffers	Gary	Activity Agreement Pilot (Leeds YS and Connexions)	0113 279 8500
Jones	Mark	Early Years	07891 270967
Joseph	Carl	Activity Agreement Pilot (Leeds YS and Connexions)	0113 279 8500
Joseph	Patricia	Connexions Youth Project	07891 274885

Jutla	Seetal	Barnardo's Willow Young Carers Service	0113 240 8368
Kay	Julie	Education Leeds - Pupil Planning Team	0113 395 1210 07872 612031
Keane	Sarah	Connexions Youth Project	07891 271031
Keon	Saskia	Education Leeds - Travellers Education Service	0113 274 8050 07891 270441
Keon	Veronica	Education Leeds - Travellers Education Service	0113 274 8050
Lambert	Katey	Education Leeds - Psychology & Assessment Service	0113 395 1179
Leach	Ann	Education Leeds - Travellers Education Service	0113 274 8050
Leaman	Naomi	Leeds Women's Aid	07776 228194
Lingard	Chris	Education Leeds - Psychology & Assessment Service	0113 395 1039
Lloyd	Victoria	Beeston Hill Children's Centre	0113 245 9753
Lund	Jon	Youth Offending Service	0113 214 1523
Mabbott	Sentabell	Education Leeds - Travellers Education Service	0113 274 8050
Mackay	Tracy	Beeston Hill Children's Centre	0113 245 9753
Mahey	Gurbaksh	Attendance Strategy Team	0113 274 6711 07891 272308
May	John	Education Leeds	0113 395 1215
McDermott	Lorna	igen Leeds Careers	0113 225 9000
McGibbon	Ross	Connexions Youth Project	07891 271039
McLaughlin	Lynne	Archway	0113 383 3944 07800 616730
Miles	Alison	BESD SILC - Elmete Central	0113 265 5457
Mitchell	Pauline D	Elmete Central BESD SILC	0113 273 1529
Moody	Kirsty	NCH Broomhill Family Centre	0113 235 0877
Moore	Heather	Archway	0113 383 3900
Musgrove	Caroline	Activity Agreement Pilot (Leeds YS and Connexions)	0113 279 8500
Myers	Marnie	Leeds Women's Aid	07776 228193
Nizami	Humma	Activity Agreement Pilot (Leeds YS and Connexions)	0113 279 8500 07825 019172
Norris	Claire	Education Leeds - Travellers Education Service	0113 274 8050
O'Sullivan	Nicola	Base 10	0113 243 3552
Parker	Kate	Mayisha Project - Black Health Initiative	0113 307 0301
Pratt	Sally	Hawthornthwaite Wood Children's Centre	0113 259 0173
Richards	Steve	The Children's Society LEAP Project & CHIVA	0113 236 3900 07713 121538
Rowland	Helen	Leeds PCT	07960 727013
Sarawan	Shantel	CHIVA	0113 225 8915
Sawdon	Jeni	The Market Place	0113 246 1659
Sharpe	Helen	Connexions Youth Project	07891 274887
Sidibe	Abdou	The Children's Society LEAP Project	0113 236 3900
Sinclair	Tina	Attendance Strategy Team	07891 270313
Slechta	Vera	CHIVA	0113 225 8915
Spurr	Christine	Education Leeds - Improvement and Inclusion Services	0113 395 1185
St Rose	Ian	Education Leeds - ABC Leeds	0113 237 4489 0113 214 4033
Stanton	Bil	igen Leeds Careers	0113 225 9000
Turner	Karen	Education Leeds - Sensory Service	0113 395 2168
Utting	Susan	The Market Place	0113 246 1659
Voller	Mandy	Attendance Strategy Team	0113 274 6711 07891 270316
Walker	Jane	Barnardo's Futures	0113 275 7314

Walker	Sara	Connexions - The Learning Agreement Pilot	0113 248 2816 07917 838395
Ward	Carol	Education Leeds - Travellers Education Service	0113 274 8050
Ward	Danni	Genesis	0113 243 0036 07940 485133
Watson	Shaun	Youth Service	0113 395 0824 07891 278003
Wells	John	Sure Start Parenting Academy	0113 224 3461
Westgarth	Christine	igen Leeds Careers	07738 212067
Whittaker	Michelle	Early Years	0113 247 4201
Wilkinson	Lyndsey	igen Leeds Careers	0113 225 9000 ext 2129
Woolford	Emma	Positive Futures	0113 274 7613 07891 275284

CONTACT DETAILS

Integrating Processes Manager Mary Armitage Telephone: 07891 276137 Email: mary.armitage@educationleeds.co.uk	Workforce Development Manager Gill Dawson Telephone: 07891 270345 Email: gill.dawson2@educationleeds.co.uk
Integrating Processes Co-ordinators	Workforce Development Co-ordinators
South Christine Thornton Integrating Processes Co-ordinator (South) Telephone: 07949 102172 Email: christine.thornton@nhs.net	South Damion Hartley Workforce Development Co-ordinator (South) Telephone: 07891 271052 Email: damion.hartley@leeds.gov.uk
North West Jackie Goodwin Integrating Processes Co-ordinator (North West) Telephone: 07891 276170 Email: jacqueline.goodwin@leeds.gov.uk	North West Ann Hunter Workforce Development Co-ordinator (North West) Telephone: 07891 270349 Email: hunterad01@leedslearning.net
East Yvonne Butterfield Integrating Processes Co-ordinator (East) Telephone: 07891 271042 Email: yvonne.butterfield@leeds.gov.uk	East Mark Ambrose Workforce Development Co-ordinator (East) Telephone: 07891 275557 Email: mark.ambrose@leeds.gov.uk
North East Jackie Claxton-Ruddock Integrating Processes Co-ordinator (North East) Telephone: 07891 275881 Email: jackie.claxton-ruddock@leeds.gov.uk	North East Shirley Twissell Workforce Development Co-ordinator (North East) Telephone: 07891 270352 Email: twisses01@leedslearning.net
West Eren Weekes Integrating Processes Co-ordinator (West) Telephone: 07891 271021 Email: eren.weekes@leeds.gov.uk	West Sean Duggan Workforce Development Co-ordinator (West) Telephone: 07891 270346 Email: duggansp01@leedslearning.net
Administration Support	IT Support
CAF Office Manager Joanne Mason Telephone: 0113 279 5261 Email: joanne.mason@leeds.gov.uk	IT Support Officer Jonathan Rhodes Telephone: 07891 274502 Email: jonathan.rhodes@leeds.gov.uk
Training Administration Assistant Jenny Wager Telephone: 0113 279 5261 Email: jenny.wager@leeds.gov.uk	